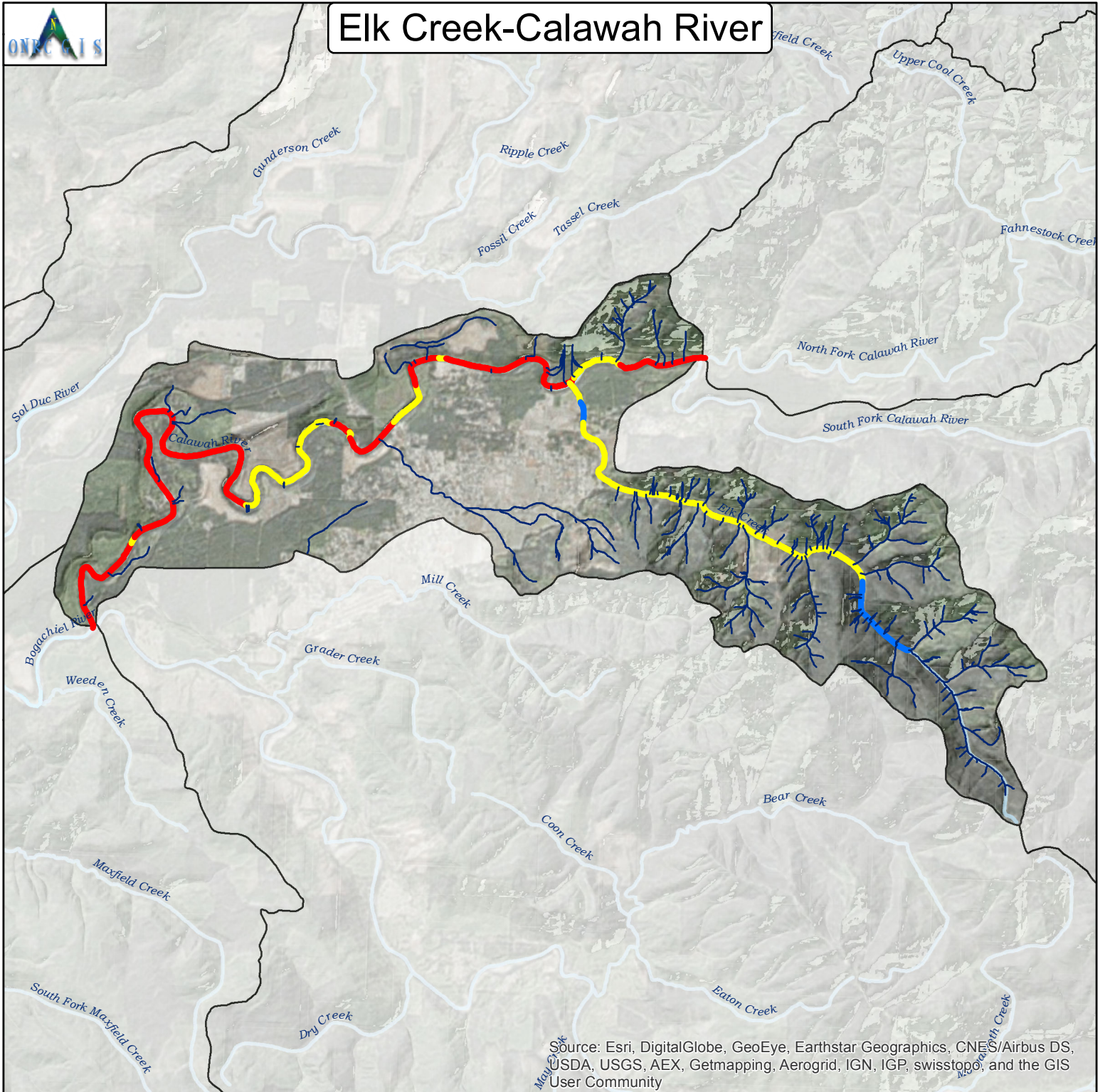


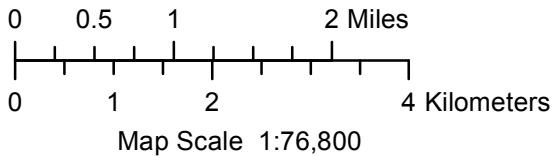


Elk Creek-Calawah River



Source: Esri, DigitalGlobe, GeoEye, Earthstar Geographics, CNES/Airbus DS, USDA, USGS, AEX, Getmapping, Aerogrid, IGN, IGP, swisstopo, and the GIS User Community

Maps By Keven Bennett
UW | ONRC GIS
11/18/2015



Intrinsic Potential Scoring for Chinook Habitat

- 0
- > 0 to 0.35 Low
- > 0.35 to 0.70 Medium
- > 0.70 to 1.00 High

Busch et al 2011

Projection: UTM NAD83 10N Meters
For Detailed Documentation Go To:

http://www.onrc.washington.edu/MarinePrograms/IPOuterCoast/PostPhaseII_MapPortal.html



Source: Esri, DigitalGlobe, GeoEye, Earthstar Geographics, CNES/Airbus DS, USGS, AEX, and the GIS User Community

Mason